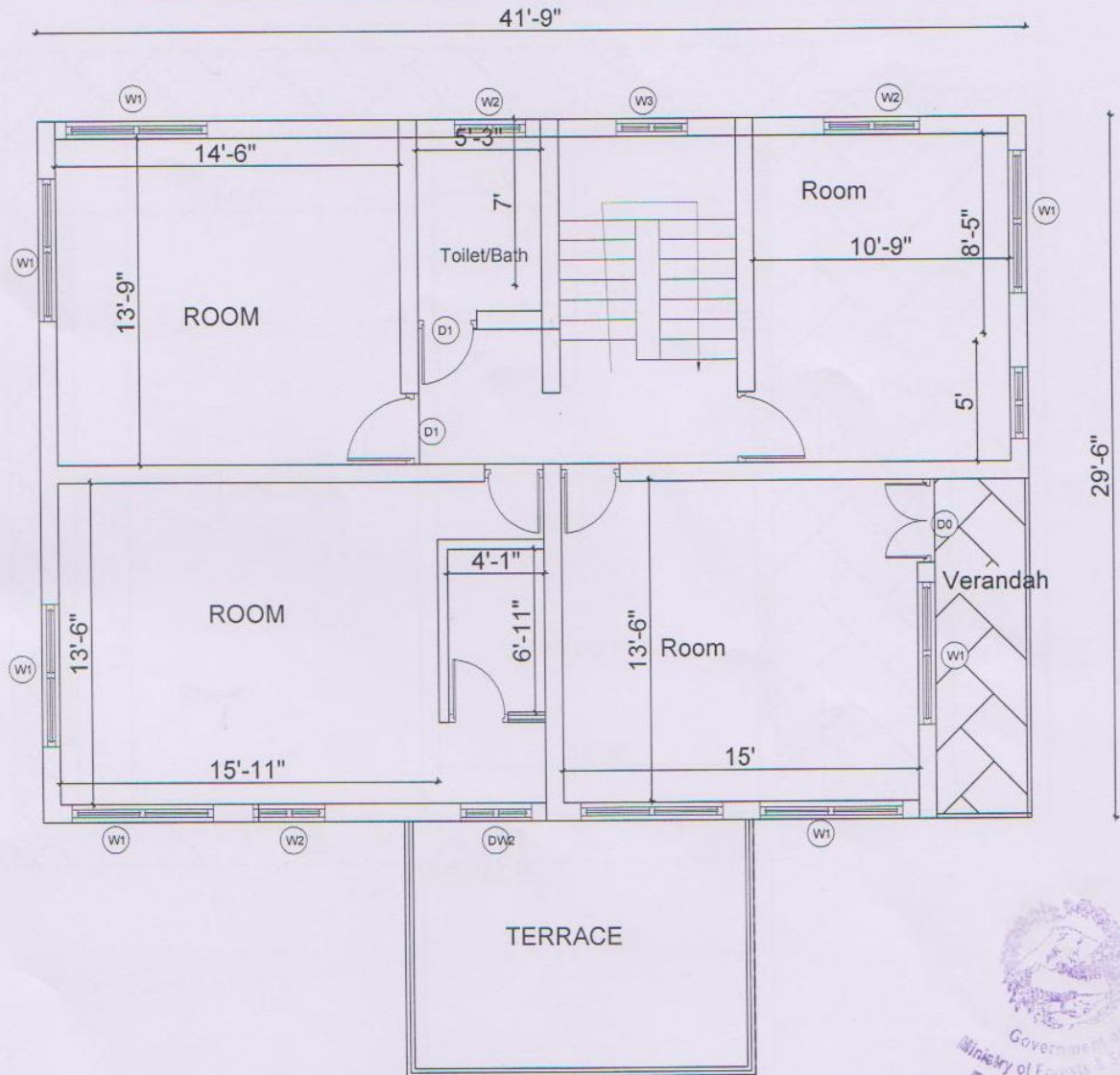


# PROPOSED District Forest Office Option 1



FIRST FLOOR PLAN Area= 1174 sq.ft.



*SM Shrestha*  
 Design/ Drawn:  
 SM Shrestha

*S.R. Wagle*  
 Checked By  
 S.R. Wagle

*G.S. Timala*  
 Approved By  
 G.S. Timala

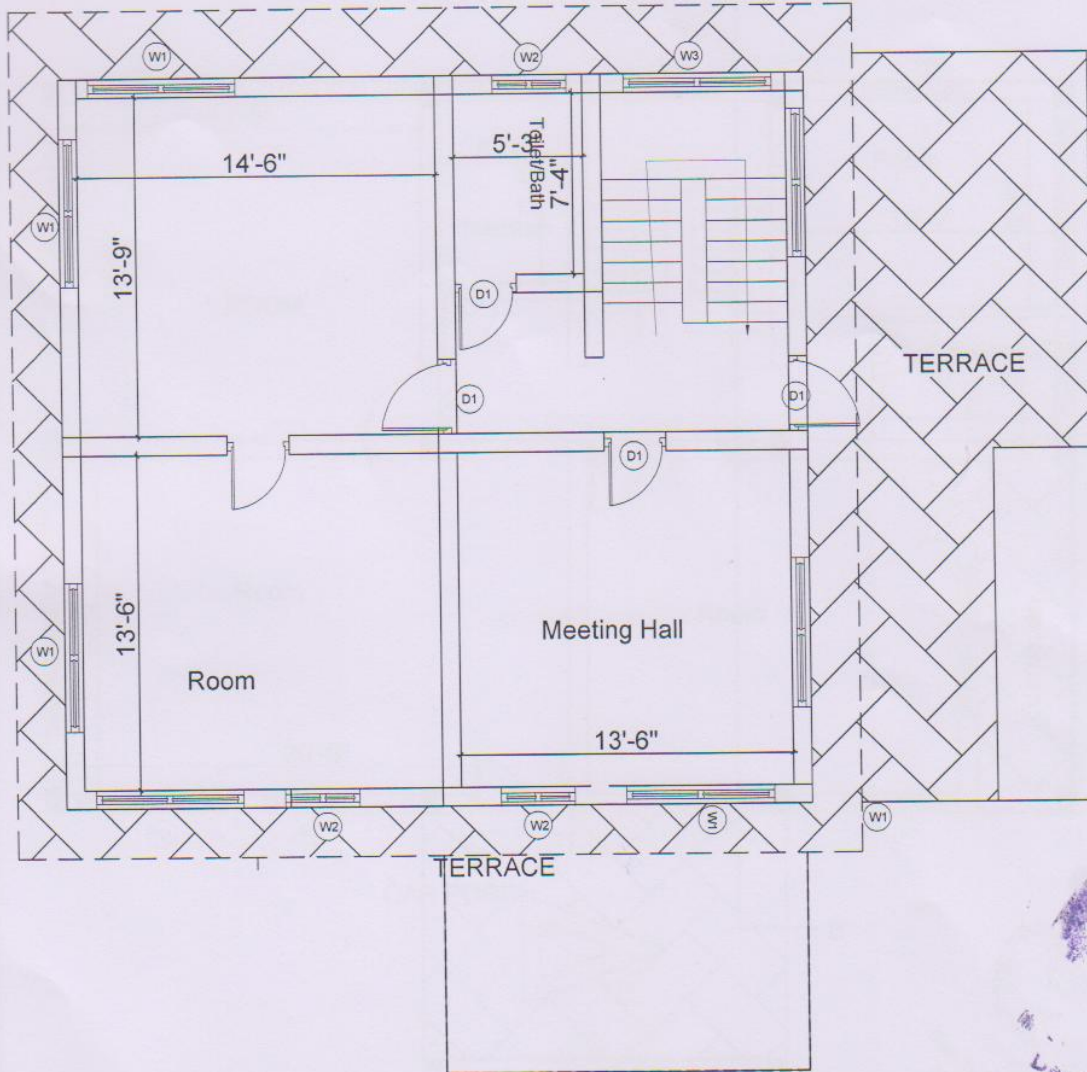
Date;  
 3 Sept. 2015

Dy. Director General

For Director General

# PROPOSED District Forest Office Option 1

41'-9"



TOP FLOOR PLAN

Area= 892 sq.ft.

*SM Shrestha*

Design/ Drawn:  
SM Shrestha

*S.R. Wagle*

Checked By  
S.R. Wagle

*G.S. Timala*

Approved By  
G.S. Timala

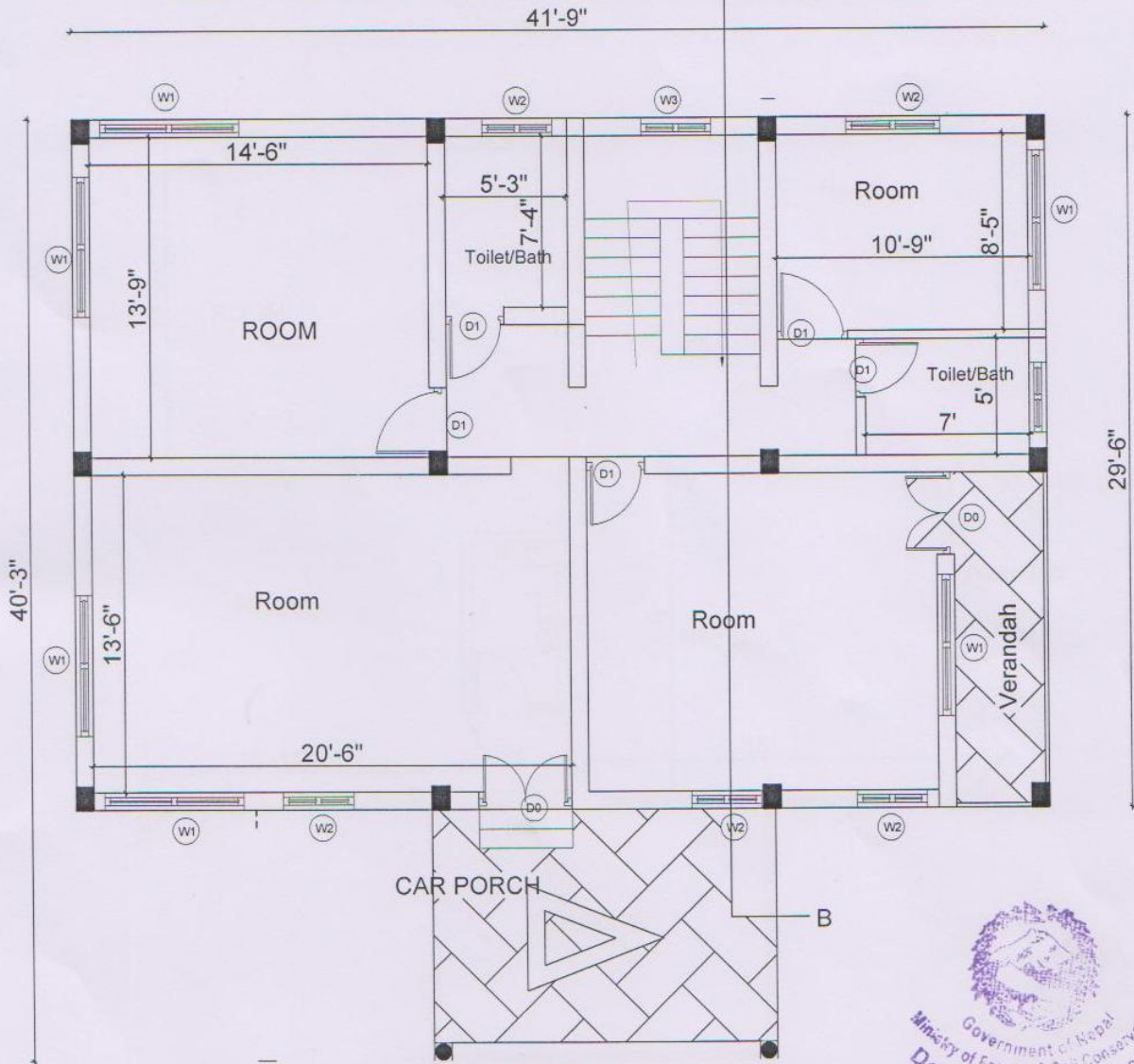


Date:  
3 Sept. 2015

**Dr. Director General**

**for Director General**

# PROPOSED District Forest Office Option 1



GROUND FLOOR PLAN Area= 1334 sq.ft.

*Smshan*  
 Design/ Drawn:  
 SM Shrestha

*S.R. Wagle*  
 Checked By  
 S. R. Wagle

*G.S. Timala*  
 Approved By  
 G.S. Timala

Date:  
 3 Sept. 2015



Dr. Director General

For Director General



नेपाल सरकार  
वन तथा भू-संरक्षण मन्त्रालय  
वन विभाग  
(योजना तथा अनुगमन महा शाखा)



चलानी नं.:- ५३५

पत्र संख्या :- ०७२/७३

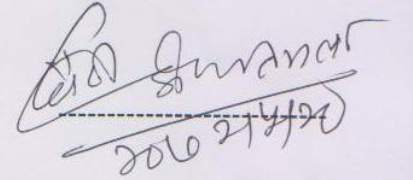
मिति :- २०७२/०५/२०

विषय: भवनको नक्शा पठाईएको वारे ।

श्री जिल्ला वन कार्यालय,

/fd\$fk, bfhvf, l; GwklNrf\$, /; j f, gj fsf, afh/f, bfr hf, l; Gwhl wfbu, nIntk/, ; a / tf s]Irtjg .

प्रस्तुत विषयमा आ. व. २०७२/७३ मा यस विभाग अन्तर्गतका विभिन्न कार्यक्रमबाट बन्ने भवन निर्माणका लागि भवनको नक्शा यसै पत्रसाथ संलग्न गरि विनियोजित बजेटको परिधिमा रहि आवश्यक कारवाहिको लागि पठाईएको व्यहोरा अनुरोध छ ।



(गौरीशंकर तिमला)

नि. महानिर्देशक